

BOURNEMOUTH & POOLE LOCAL SAFEGUARDING CHILDREN BOARD



Annual Report - 2008-2009

**BUSINESS PLAN
KEY OBJECTIVES 2009 - 2011**

EXECUTIVE SUMMARY

www.bournemouth-poole-lscb.org.uk

CONTENTS

	Page
1. Introduction by Ron Lock, Independent Chair	3
2. Statement of Purpose and Principles	4
3. Progress and Achievement 2008-2009	5
4. LSCB Key Objectives 2009-'11	8
5. Bournemouth and Poole LSCB Executive	10
6. LSCB Work Programme 2009-10	10
7. LSCB Budget information	10
8. Measuring Effectiveness	11
Organisational structure chart	12
9. Summary of 2008-2009 Management Information Report relating to Safeguarding/Child Protection	13
Governance Chart	14

INTRODUCTION

This report encompasses the Annual Report for 2008-09 and the Business Plan covering the period 2009-11, and reports on the continued progress and achievements in safeguarding work across all agencies and describes how some important changes to the structure of the LSCB have been undertaken in order to enhance the way in which the LSCB delivers its key functions.

There continues to be a high level of commitment and contribution from all partner agencies, and particular dedicated work from a number of key individuals within agencies, to the work of the Board.

From April 2008, following a review of the work of the Board, significant developments were agreed including the appointment of an Independent Chair and the creation of a Safeguarding Development Officer. The additional funding agreed by partner agencies was key in securing these posts.

Subsequently, the new Independent Chair, Ron Lock, took up post from September 2008. Because of the need for repeat recruitment processes, no appointment was able to be made to the Safeguarding Development Officer post during the April '08-March '09 period. However an appointment was ultimately made and Tessa Valpy took up this post in April '09.

Changes to the LSCB structure created an Executive with improved senior representation and a series of task groups in a number of specific safeguarding areas were introduced during 2008- 09. The new LSCB Executive structure commenced under the chairmanship of the new Independent Chair, and further senior representation was added to the Executive from Adult Services from both Poole and Bournemouth. During 2008 -09 there was a continuing focus on the work of the sub groups to ensure that their work reflected the objectives of the Business Plan. This has led to some further proposed changes to the structure of sub-groups and task groups, in order to reflect the revised key objectives of the 2009-11 Business Plan.

This improved structure has helped to ensure that the LSCB has been able to drive service development and improvement linked to locally identified need and priorities. The new key objectives in the Business Plan for 2009-11 are already underway and reflect the learning gained at both the local and national levels, particularly in respect of findings from serious case reviews.

The LSCB remains committed to developing and leading a wide ranging safeguarding agenda and acknowledges the professional commitment and quality of service from staff across all agencies within Bournemouth and Poole who make it their priority to safeguard children.

RON LOCK,

**INDEPENDENT CHAIR,
BOURNEMOUTH & POOLE LOCAL SAFEGUARDING CHILDREN BOARD**

Services working together across Bournemouth and Poole in safeguarding work for children and young people:

Borough of Poole	Bournemouth Borough Council
Dorset Police	Dorset Probation Area
Bournemouth & Poole Youth Offending Team	Dorset Healthcare NHS Trust
Strategic Health Authority	Bournemouth & Poole PCT
Poole Hospital NHS Trust	Connexions
CAFCASS	Voluntary Organisations
Community Services	Faith Groups
Bournemouth and Christchurch Hospital NHS Foundation Trust	

2. Summary of STATEMENT OF PURPOSE AND PRINCIPLES

Bournemouth and Poole Local Safeguarding Children's Board is established as a multi agency statutory body which has a responsibility to co-ordinate local work between agencies to safeguard and promote the welfare of children and to ensure the effectiveness of that work, and is committed to ensuring that agencies work together to safeguard and promote the welfare of children to high standards in three broad areas of activity.

Safeguarding work with children and young people should aim to help them achieve all of the five outcomes within Every Child Matters, by providing universal preventive, responsive and proactive initiatives across agencies to enable children and young people to:-

- Stay safe - Be healthy - Enjoy and achieve - Achieve economic well being - Make a positive contribution

The LSCB will achieve this through a shared commitment to promoting best practice and continuous improvement in the quality of safeguarding services alongside the development of effective local policies and procedures for inter-agency work to safeguard children within the statutory framework and guidance;

The LSCB recognises that children and young people should be at the centre of all safeguarding work and will actively promote their involvement in raising children and young peoples' awareness of how to keep safe. The LSCB will work in partnership with parents and carers and the wider community.

The LSCB will ensure that processes are in place so that allegations against staff are appropriately referred, investigated and managed.

Annual Report - PROGRESS AND ACHIEVEMENTS April 2008- March 2009

3.1 The overall progress and key achievements of the LSCB in 2008-09 are highlighted as follows: -

- Replacement of Steering Meetings by LSCB Executive meetings was instigated under the new Independent Chair from October 2008 - March '09, with senior manager attendance. Representation from Adult Social Services has also been secured on the LSCB Executive.
- Distribution of procedures as part of Pan Dorset Inter Agency Safeguarding Procedures has been completed.
- Pan Dorset Child Death Overview Panel has been firmly established under new chairmanship and has been operational throughout 2008 - 09
- Two Serious Case Reviews were undertaken and completed within agreed timescales. One Serious Case Review was evaluated as "Adequate" by Ofsted - the other Serious Case Review had not been evaluated within this time period.
- Following the grading of two Serious Case Reviews completed in early 2008, as "inadequate" by Ofsted, both cases were formally re-reviewed under independent chairmanship and under new government guidance. These were completed within timescales by February 2009
- A multi agency audit was undertaken in respect of the findings from the evaluation of the Baby Peter Serious Case Review and of the work of Haringey LSCB. All LSCB constituent agencies fully participated by completion of a locally devised self-audit template.
- The outcome from this multi agency audit was the establishment of revised key objectives for the LSCB.
- A formal review was undertaken of the work and objectives of the LSCB sub groups and task/reporting groups and their relation to the '07-10 Key Objectives, leading to proposals for a restructure accepted by the LSCB Executive, to be completed during late 2009.
- The LSCB hosted a day Conference in November 2008 entitled "To talk or not to talk", focusing on information sharing and inter agency communication, including learning from serious case reviews both locally and nationally.

Summary of key progress and achievements in respect of the work of the sub groups and task groups were:

Performance and Effective Practice Group (formerly known as the Performance and Quality Assurance Group)

- Two audit reviews undertaken in respect of safeguarding themes
 - in relation to young people's participation in Child Protection conferences
 - in relation to substance misuse/mental health issues for parents
- Monitored the implementation of the Recommendations and Action Plans for the three Serious Case Reviews in process during the year

Safeguarding in Education Group

- A number of safeguarding policies and guidelines, as well as the self assessment tool kit for schools, were updated and issued.
- The E-Safety group was now established as a separate sub group of the LSCB
- There was continued development of the safeguarding forum for designated members of staff
- An early years forum for safeguarding was established in Poole

Community Awareness Group/Community and Engagement Group

- This sub group was re-titled and reformed to become the new Communication and Engagement Sub Group
- Executive Summaries of all completed Serious Case Reviews were added to the LSCB website
- Publication of Child Protection Conference leaflets parents and young people.

Pan Dorset Safeguarding Children and Young People in Health

- Continue to contribute to improving interagency procedures, determining thresholds and the uptake of e-learning.
- Contribution to serious case reviews and the implementation of action plans in respect of health agencies.

Additionally NHS Bournemouth and Poole completed a self-assessment audit in respect of the safeguarding practice of GPs.

Serious Case Review Sub Group/Panel

- Two Serious Case Reviews were instigated, with the involvement of independent Overview Report authors.
- Newly revised Serious Case Review procedures were utilised to conduct these Reviews
- Two re-review processes were instigated to revise previous "inadequate" Serious Case Reviews inline with government guidance

Pan Dorset Child Death Overview Panel

- New Chair of the Panel appointed along with Administrator/Project Manager
- Process for reviewing Child Deaths has been established

Policy and Procedure Group

- This is a Pan Dorset sub group which completed its first year of operation during 08-'09
- Procedures were updated and issued in respect of : -
 - managing individuals who may pose a risk of harm to children
 - notifications and transfer of information
 - safeguarding children who may have been trafficked,
 - text messaging

Safeguarding through Training

- A multi agency conference on Managing Childhood Deaths took place in March 2009
- The full training programme was successfully implemented during 2008-'09

Adults who pose a sexual risk

- The document "Protecting children from sexual abuse" - a guide for parents, carers and professionals, was produced.
- The NSPCC audit tool/checklist has been incorporated into agency procedures.
- Consultation sessions were established for practitioners to seek advice and support in respect of operational practice

Children and Young People who pose a sexual risk

- Pan Dorset risk management tool within the educations setting has been developed and piloted in Bournemouth and Poole
- A framework was devised for mapping provision of service for children who pose a sexual risk to children and a gap analysis report produced.

4 BUSINESS PLAN KEY OBJECTIVES - 2009-2011

4.1 Reduce harm to children and young people caused by parental/adult behaviours and difficulties. In particular this relates to: -

- Domestic Abuse
- Adult Mental Health
- Substance Misuse

- 4.1.1 To engage adult services in supporting this key objective and that they link with the "Think Family agenda"
- 4.1.2 To develop a formal link with the work of MARAC in order to be alert to current themes and practice issues, and their relationship to safeguarding children.
- 4.1.3 To ensure that adult mental health, adult drug and alcohol services, as well as the Police and Probation, have well understood and appropriate referral processes which prioritise the protection and well-being of children
- 4.1.4 To ensure there are effective information sharing systems and referral pathways in place from adult services to services for children and young people.

4.2 Promote effective coordinated action to address the emotional well being of children and young people and to reduce harm caused by:-

- Substance Misuse
- Self harming behaviour
- Bullying
- Children who are missing from home/education
- Conduct disorders

- 4.2.1 To develop and monitor relevant data sets which will identify incidence and trends
- 4.2.2 To develop an E-Safety Policy
- 4.2.3 To clarify the referral processes into specialist services and the respective threshold criteria
- 4.2.4 To develop anti bullying strategies
- 4.2.5 To engage private and independent services in the work of the LSCB in order to meet this objective.

4.3 Promote effective safeguarding arrangements and practice in early preventative work

- 4.3.1 To analyse the effectiveness of the implementation of the Common Assessment Framework and Contact Point to help establish consistency of practice.
- 4.3.2 Establish clear consistent thresholds for intervention across the continuum of need within Children's Services.
- 4.3.3 To consider the impact of preventative initiatives, e.g. in respect of: -
 - Children's Centres,
 - Early Years services

4.4 Promote and support children and young people's participation in their own safeguarding and in the work of the LSCB

- 4.4.1 The Communication and Engagement sub group to propose and develop relevant initiatives

- 4.4.2 To ensure that children and young people have access to advocacy services when subject to safeguarding concerns.
- 4.4.3 Undertake promotional activity around safeguarding with children and young people.

4.5 Engage the voluntary, community, sports and faith sectors in the work of the LSCB, and to seek their active contribution to the range of safeguarding activities of the LSCB.

- 4.5.1 To promote the “Compact” and gain commitment.
- 4.5.2 To develop appropriate newsletters to inform the voluntary sector
- 4.5.3 To ensure training opportunities are available to the voluntary sector which help to develop their capacity and capability to undertake and promote safeguarding.
- 4.5.2 To support the engagement of Language Schools in fully encompassing the safeguarding agenda

4.6 Promote equality and respect diversity within all areas of safeguarding

- 4.6.1 To routinely analyse relevant data in respect of ethnicity and diversity in order to inform safeguarding and performance issues
- 4.6.2 For the LSCB to only approve Policies or Procedures where issues of equality and diversity are clearly identified.
- 4.6.3 To clarify the consistency of interpreter services across agencies
- 4.6.4 To identify that the safeguarding needs of disabled children are being adequately addressed.

4.7 Ensure that the LSCB governance and accountability arrangements are understood by member agencies, and that they operate effectively.

- 4.7.1 To ensure that appropriate links are developed and maintained with the Children’s Trusts and for the LSCB to be able to provide appropriate challenge when necessary, and to provide an annual report to the Trusts on the effectiveness of safeguarding in the local area.
- 4.7.1 To develop a formal agreement process between the LSCB and its constituent agencies, which will clarify and confirm levels of commitment and accountability to the LSCB’s key objectives
- 4.7.2 To ensure that effective reporting processes exist for the LSCB Sub Groups
- 4.7.3 To provide management information in respect of national requirements and to audit or monitor local safeguarding practice in response to govt initiatives and/or LSCB priorities.
- 4.7.4 Ensure that effective learning takes place across agencies, following the completion of Serious Case Reviews

4.8 Ensure a process exists to keep the LSCB informed and alert to workload and resource issues which may impact upon the capacity for safeguarding locally.

- 4.8.1 To generate effective links with the Children’s Workforce Development Programme.
- 4.8.2 To develop a process which will enable the LSCB to be kept apprised of workforce and capacity issues across all agencies
- 4.8.3 To develop a coordinated approach when necessary to identify and manage the impact of workforce capacity issues or of any reduced resources on safeguarding practice.

5. BOURNEMOUTH AND POOLE LSCB EXECUTIVE

The LSCB Executive is the overarching body which co-ordinates and drives the overall work of the full Local Safeguarding Children Board and ensures that its statutory functions are fulfilled.

A review of the LSCB structure and model of working during 2007-08 concluded there was a need for improved senior representation from partner agencies on the LSCB in order to extend the reach of the LSCB into partner agencies and ensure safeguarding responsibilities are understood and met at every level within partner organisations.

The LSCB Executive has developed from the previous Steering Group arrangement to now ensure Senior i.e. 1st or 2nd tier representation from all statutory partner agencies. This change from September 2008 corresponded with the appointment of the LSCB Independent Chair.

The LSCB Executive has a set of Terms of Reference to give the framework for its operation.

6. LSCB WORK PROGRAMME 2009-10

All of the sub groups and task groups identified in the organisational structure (on page 12) have developed work plans for 2009-10 which reflect components of the key objectives. These are detailed in the main report.

7. LSCB BUDGET

LSCB funding is based on a pooled budget across Bournemouth and Poole with financial contributions from all partner agencies.

The LSCB Budget - *Funding 2008-09:-*

Item	Funds received
Sub total of agency contributions to LSCB core work	97,100
Borough of Poole Child Death Overview - Area Based Grant	14,000
Bournemouth Borough Council Child Death Overview - Area Based Grant	18,000
Under spend brought forward from 2007-08	17,739
Total	146,839

Expenditure 2008-09:-

	Budget	Expenditure
Total	145,000	108,435

Budget 2009-10:-

	Funding - including under spends carried over	Budget
Total	180,810	158,000

It is difficult to plan for the cost of Serious Case Reviews which have totalled almost £25k since Sept 2008.

Budget Plan for 2010 - 2011

*Funding: (NB * This presupposes an increase from agency contributions)*

Item	Current Budget	Balanced Budget*
Contributions from agencies	97,100	107,190
Borough of Poole Child Death Overview - Area Based Grant	14,000	14,000
Bournemouth Borough Council Child Death Overview - Area Based Grant	18,000	18,000
Expected under spend brought forward from 2009-10	22,810	22,810
Total	151,910	163,000

8. MEASURING EFFECTIVENESS

Bournemouth and Poole LSCB is committed to developing a range of Performance Management and Quality Assurance systems, in order to demonstrate the effectiveness of the Board and provide real examples of how the LSCB is making a difference. The Performance and Effective Practice Working Group leads this area of work.

BOURNEMOUTH AND POOLE LSCB STRUCTURE

B&P LSCB EXECUTIVE GROUP
Senior tier partner agency representation
Independent Chair - Ron Lock

SUB GROUPS:

PAN DORSET

Serious Case Review
Pam Trevillion

Child Death Overview
Adrian Dawson

Training & Workforce Development
Mike Henry

Policy & Procedure
Jackie Last

Safeguarding in Health
Julie Doherty

Adults Who Pose a Sexual Risk
Murray Shackelford

Children Who Pose a Sexual Risk
Jo Ballantyne

BOURNEMOUTH AND POOLE

Safeguarding and Service Delivery
TBA

Communication and Engagement
Tessa Valpy

Performance & Effective Practice
Fiona Haughey

TASK GROUPS:

E Safety
Paul Smart/Jean Haslett

Missing children/Child Trafficking
Wendy Manning

Children affected by domestic violence
Ann Graham/Gerry Moore

Safe recruitment/Allegations Management
Jean Haslett

REPORTING GROUPS:

Safeguarding in Education
Vicky Wales

Police and Safeguarding Managers
TBA

Anti bullying
To be part of the E-safety group

9. PERFORMANCE INFORMATION REPORT

Summary of Bournemouth and Poole Activity April 08- March '09

Number of Sec 47 child protection enquiries undertaken: -

Bournemouth	192
Poole	199

Number of Initial child Protection Conferences: -

Bournemouth	150
Poole	111

Children who became subject to a Child Protection Plan

Bournemouth	142	Highest category by %	Neglect 50%
Poole	99	Highest category by %	Neglect 47%

Children whose Child Protection Plans were discontinued during the year: -

Bournemouth	136
Poole	96

Snapshot of children & young people who were subject of a Child Protection Plan as at March 2009

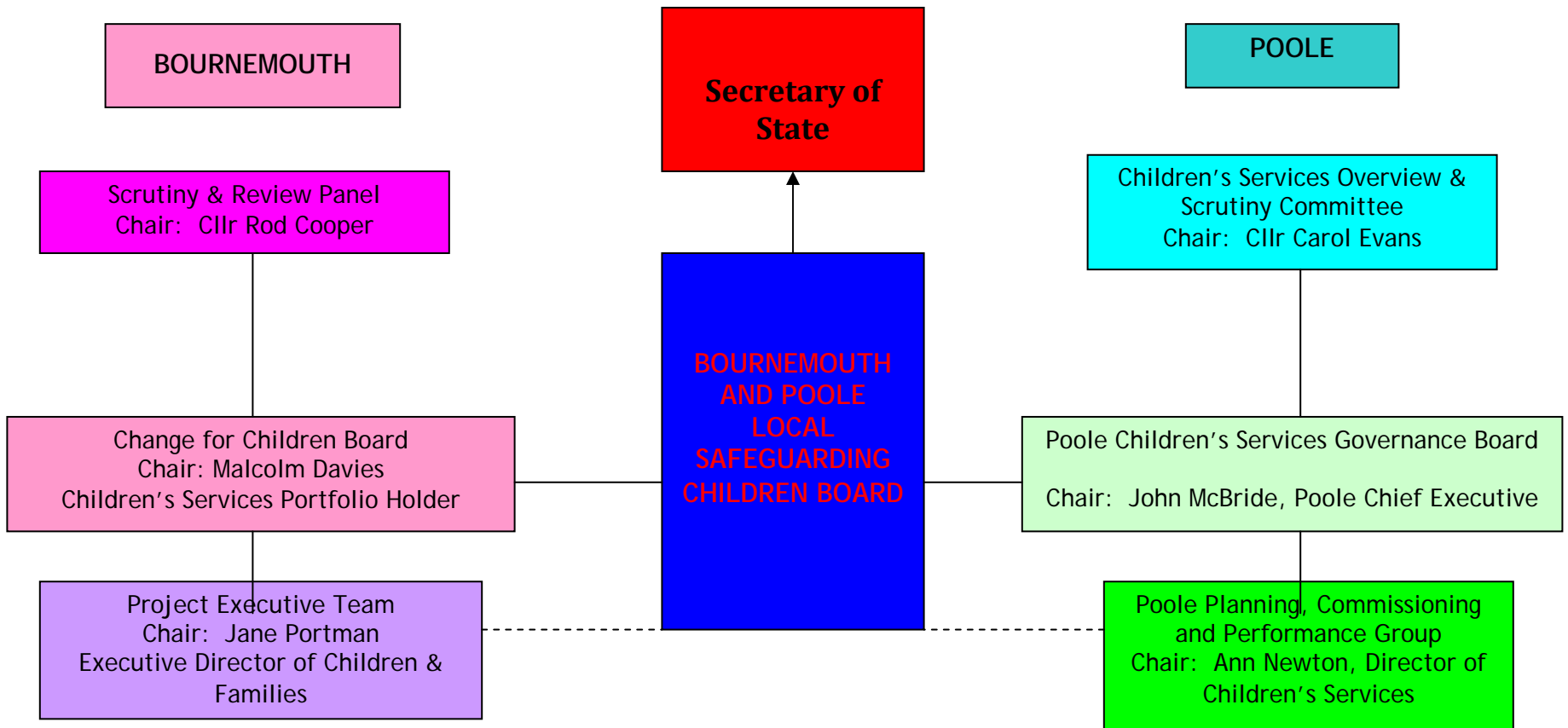
Bournemouth	97
Poole	78

Analysis of comparison between 07/08 data and that of 08/09: -

-Following a significant increase in child protection activity across both boroughs from 2006/07, this higher level of activity has been maintained. The same numbers of children in 07/08 were subject to CP Plans in 08/09 in Bournemouth with an increase in the Poole figures of approximately 10% to 99 children.

- There has been an increase from 07/08 in the numbers of children whose CP Plans have been discontinued during the year 08/09 which would suggest that there has been greater activity to reduce the risk to these children, and thereby remove the need for them to have a CP Plan.

BOURNEMOUTH & POOLE LSCB GOVERNANCE CHART



The Bournemouth and Poole LSCB has a clear Terms of Reference to direct and monitor its work, with work being undertaken to establish clear governance arrangements as part of the 2009-10 Business Plan.

The LSCB's Compact, which was introduced to enable agencies, professionals and volunteers to understand their vital role in supporting children and young people, has been further updated in order to support the LSCB's work from 2009-11

The overall aims of the Compact are to gain sign up by the LSCB constituent agencies and other organisations who provide services to children and young children, to assist and advise them to safeguard children by having in place policies, procedures, safe working practices and suitable trained staff and volunteers.

Bournemouth and Poole LSCB,
27, Slades Farm Road,
Ensbury Park,
Bournemouth,
BH10 4ES

Tel: 01202-458873
Fax: 01202-458020